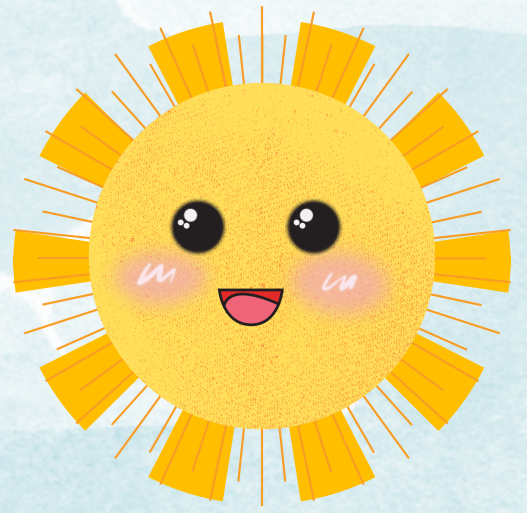


Kids Playground

Busy book by: tinybubbles

Kids Playground

Busy book by: tinybubbles



This book belongs to :

I am...

yrs old

This is me

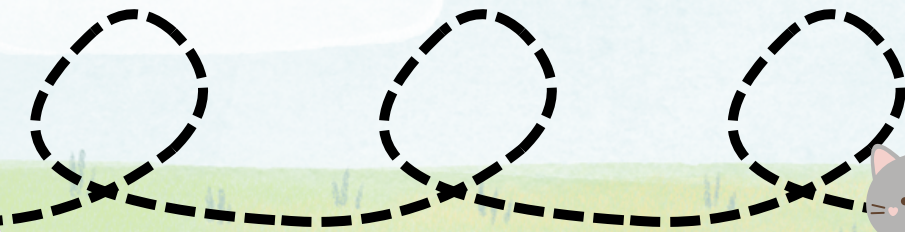
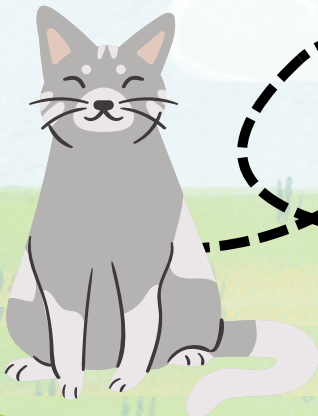
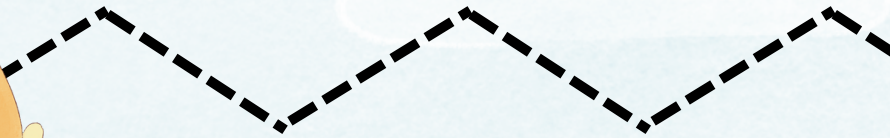
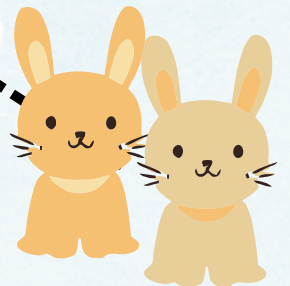
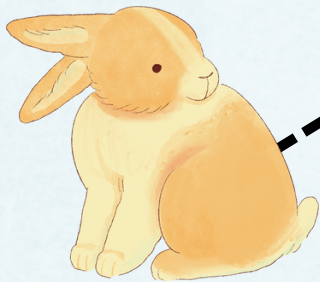
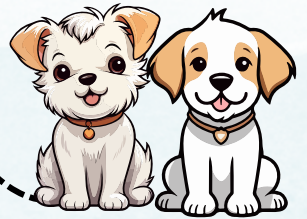
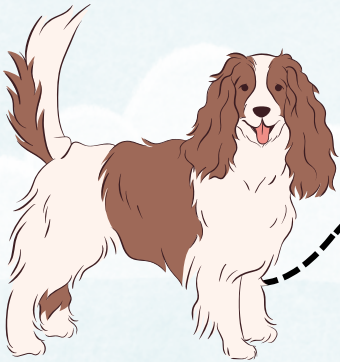
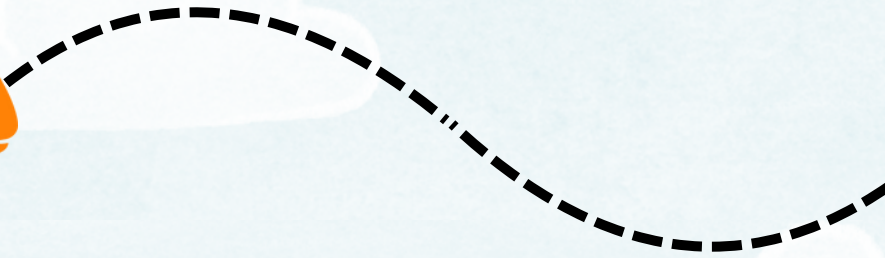
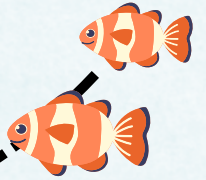
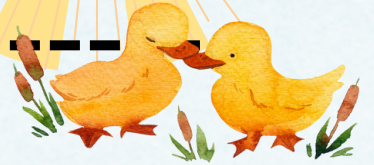
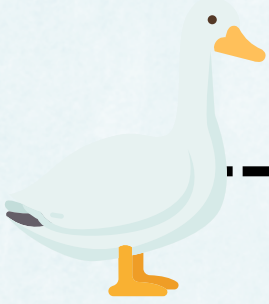
Photo
here

My favorite color is :

(Or you can draw yourself!)

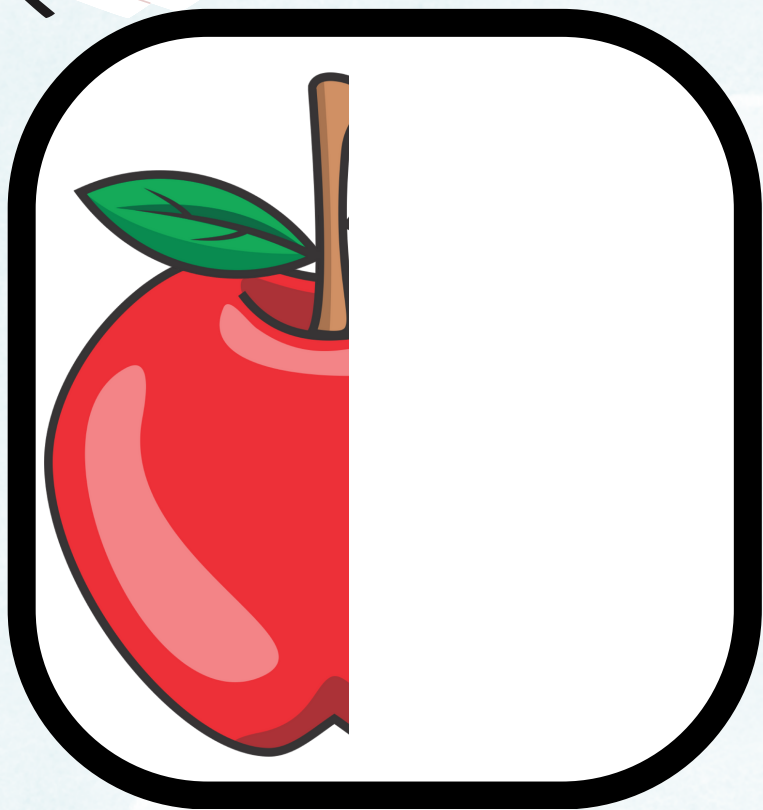
When I grow up, I want to be a/an...

Help Mama trace her path
towards her babies





DRAW *and* TRACE



Apple

Apple

Apple



Apple Apple

Apple Apple

Apple Apple

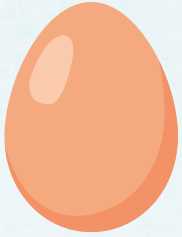
Mix and Match



Name that Shape





















Square

Oval

Star

Circle

Rectangle

Cross

Arrow

Triangle

Heart

Diamond

Cut and Paste

Small

Paste
here

Medium

Paste
here

Big

Paste
here

Red

Paste
here

Blue

Paste
here

Yellow

Paste
here

Winter

Paste
here

Summer

Paste
here

Fall

Paste
here

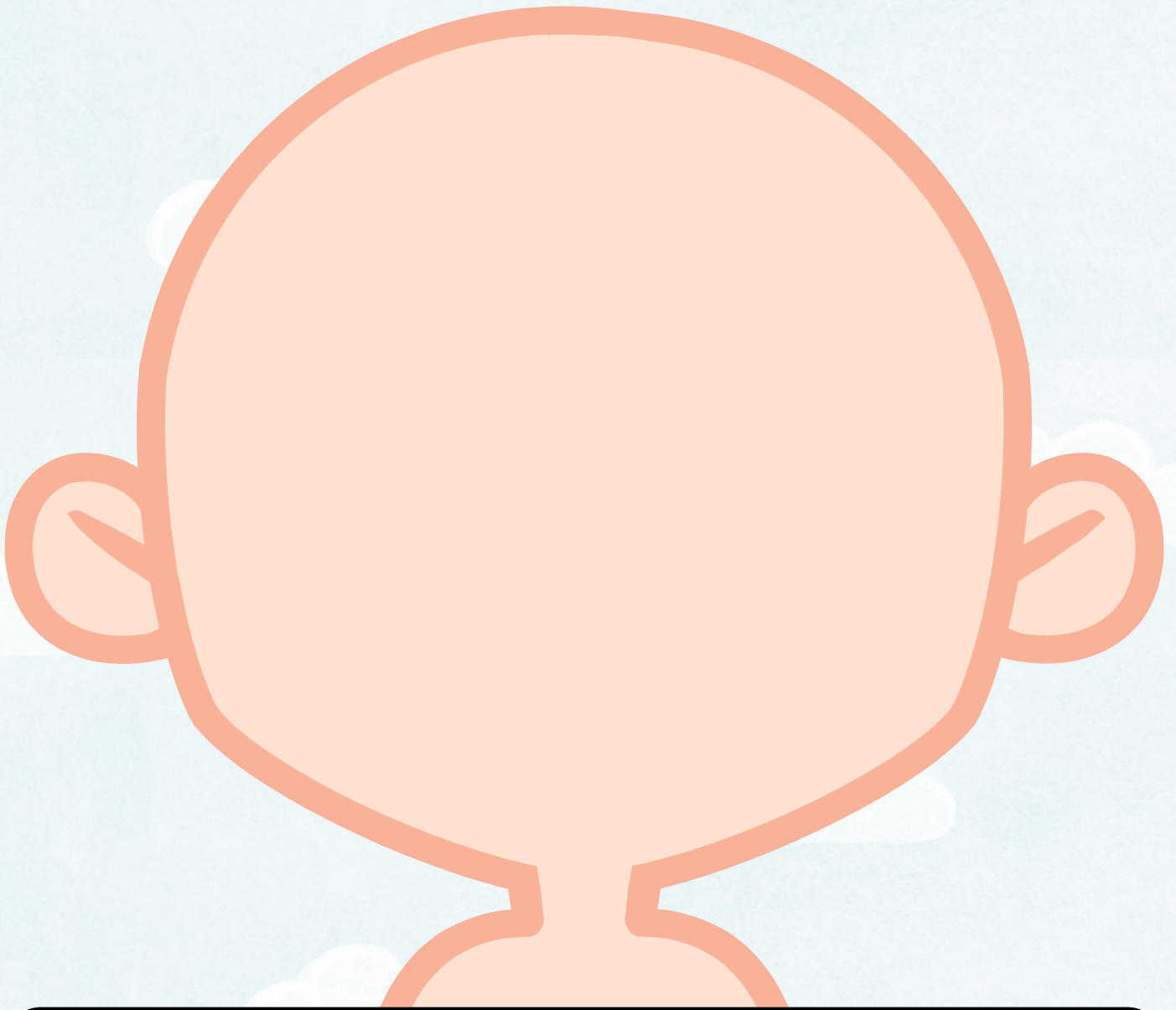
Cut out



Can you identify and match each emotions?



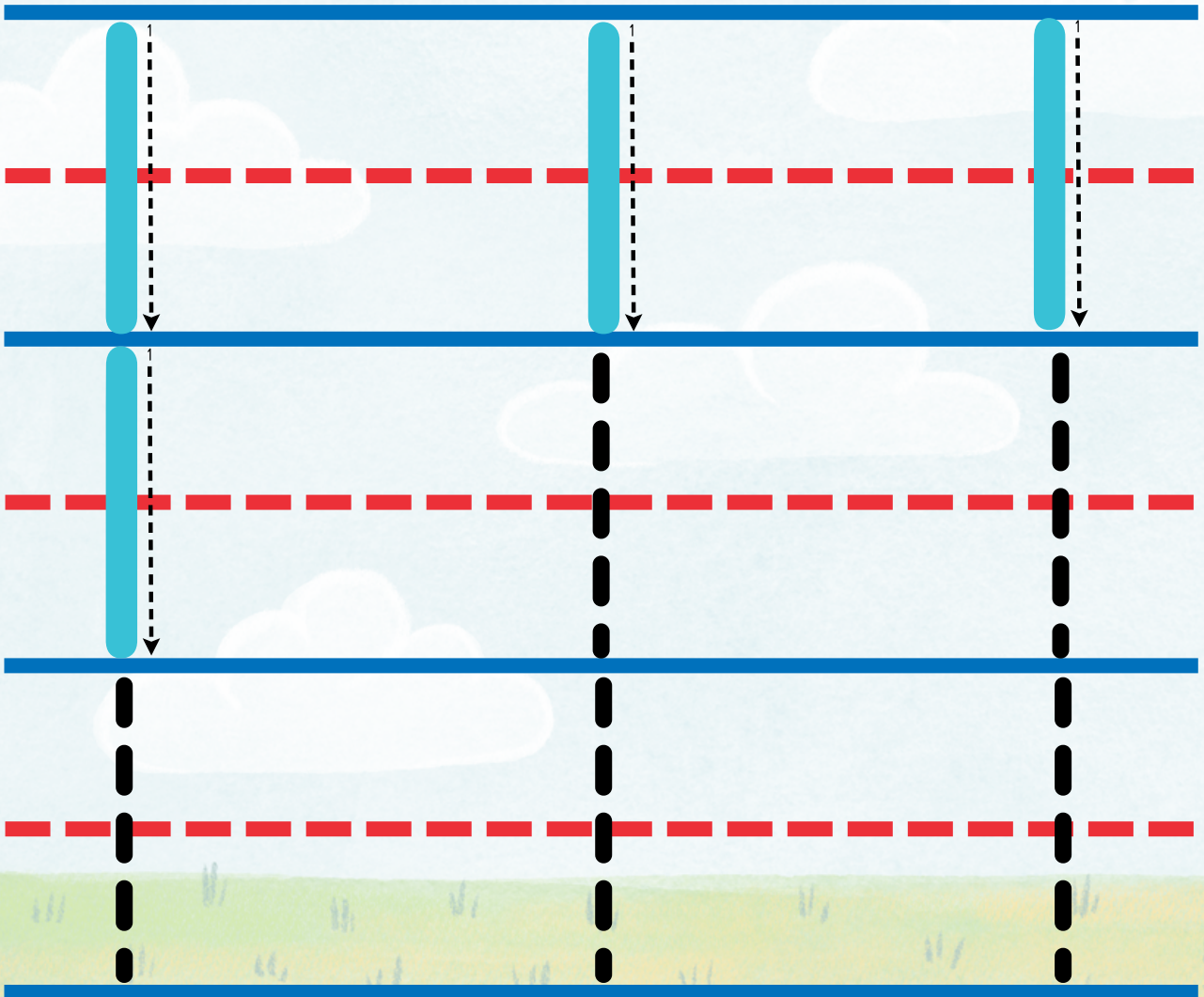
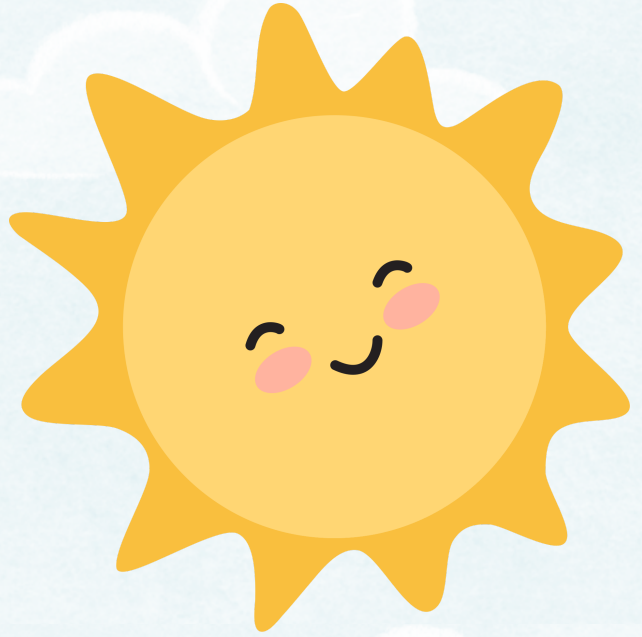
How do you feel
today?



A large, empty white rectangular box with a thick black border, intended for a child to write their answer to the question.

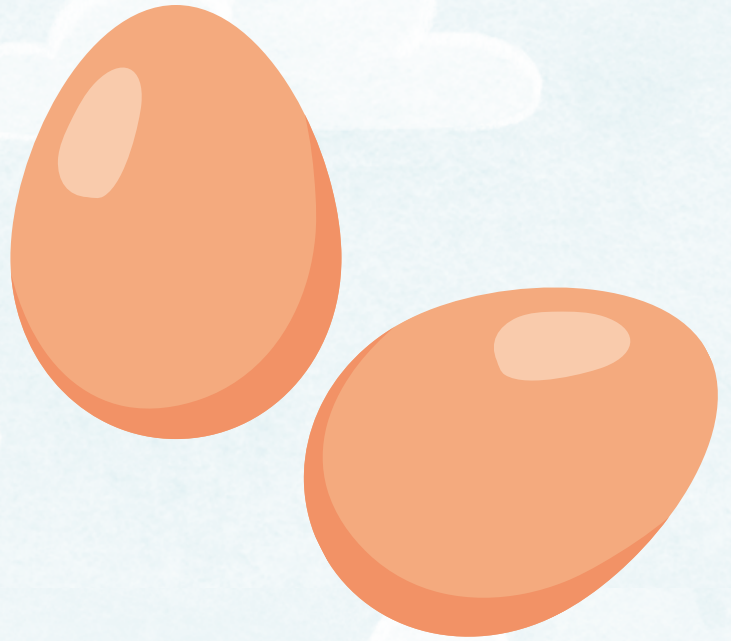
Count and Trace

One



Count and Trace

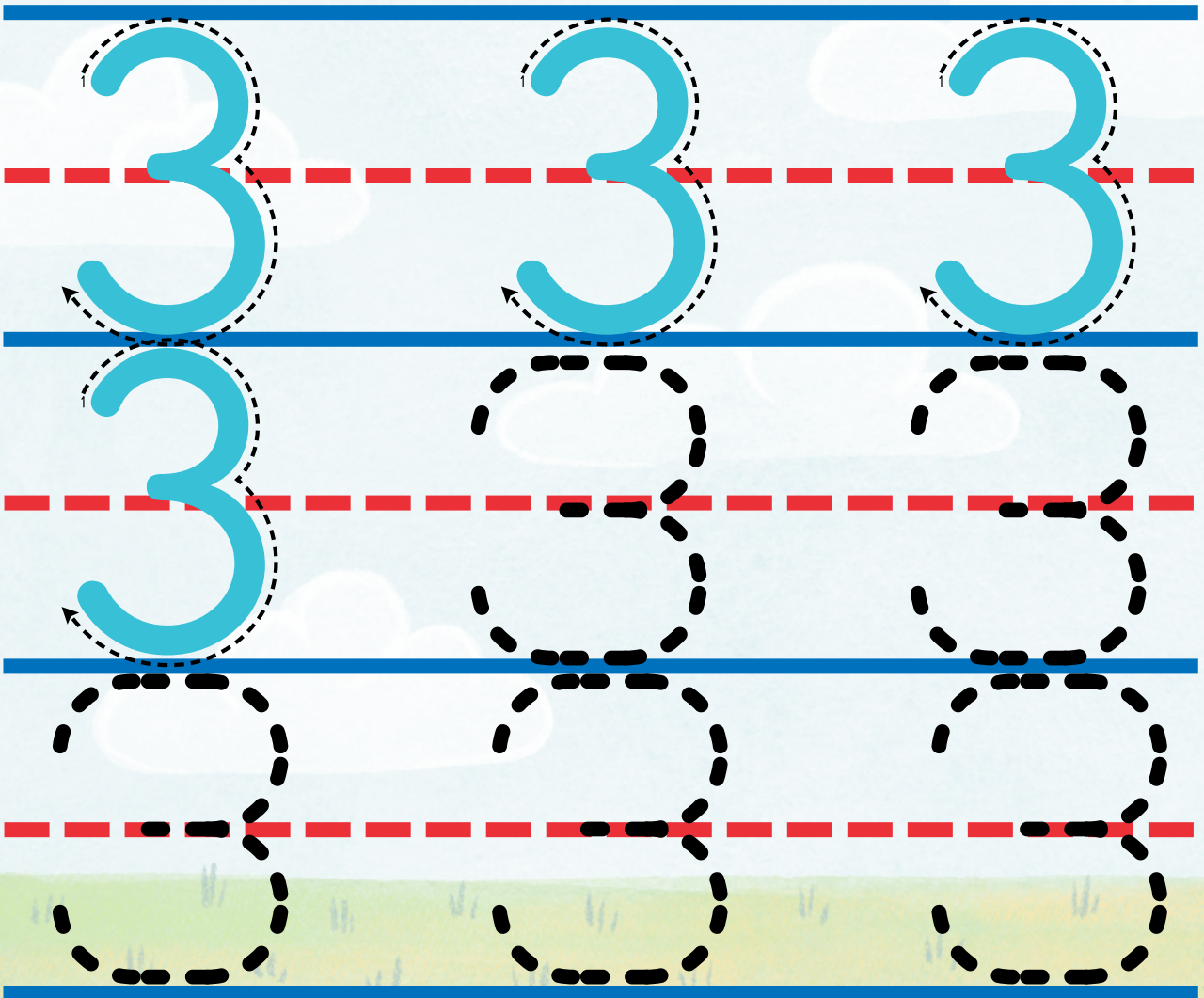
Two



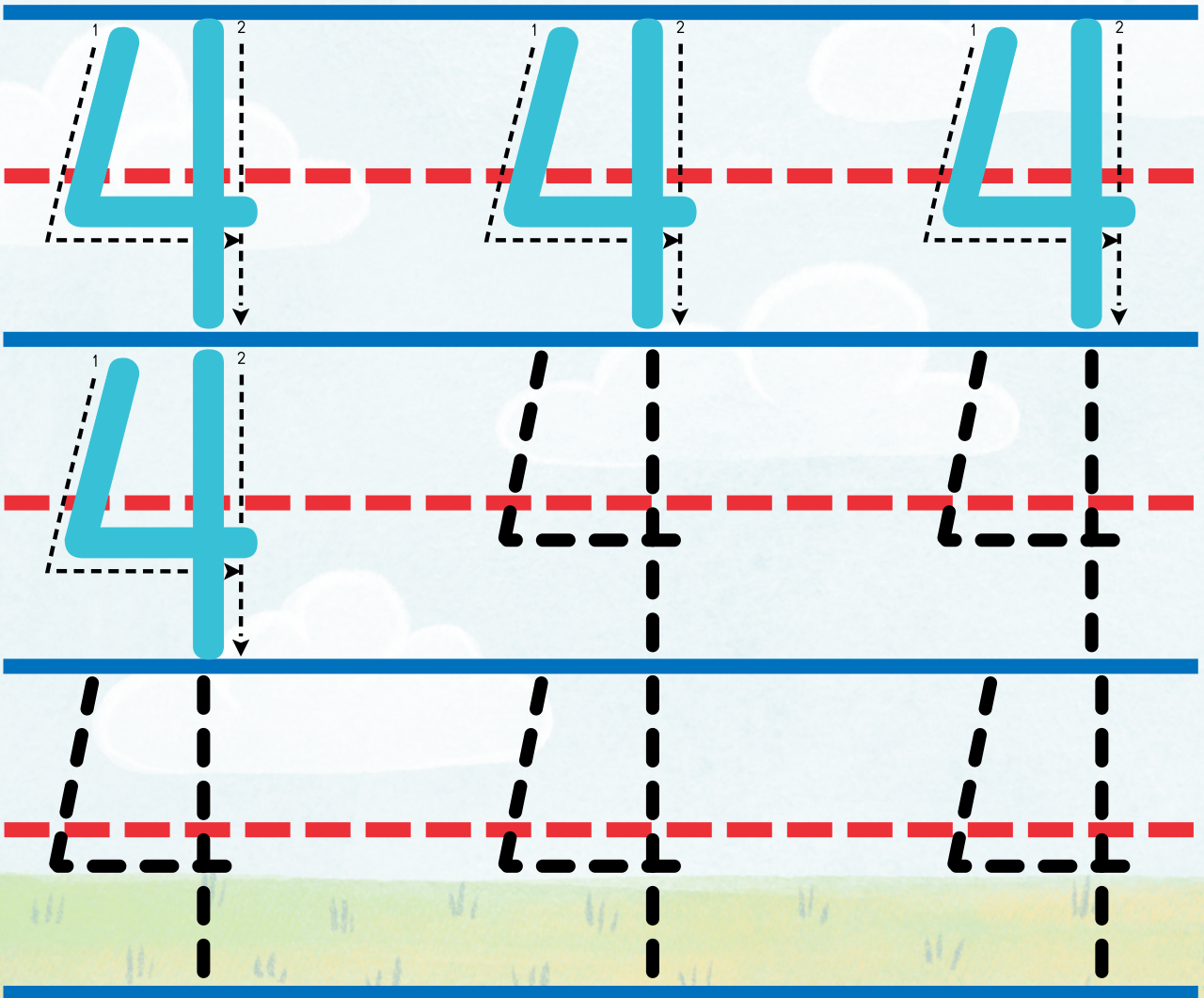
Tracing practice for the number 2. The page is divided into three rows, each with a solid blue top line, a dashed red middle line, and a solid blue bottom line. The first row contains three large blue numbers '2' with dashed outlines and arrows indicating the stroke direction. The second row contains one large blue '2' with a dashed outline and stroke direction arrows, followed by two dashed black '2's. The third row contains three dashed black '2's.

Count and Trace

Three

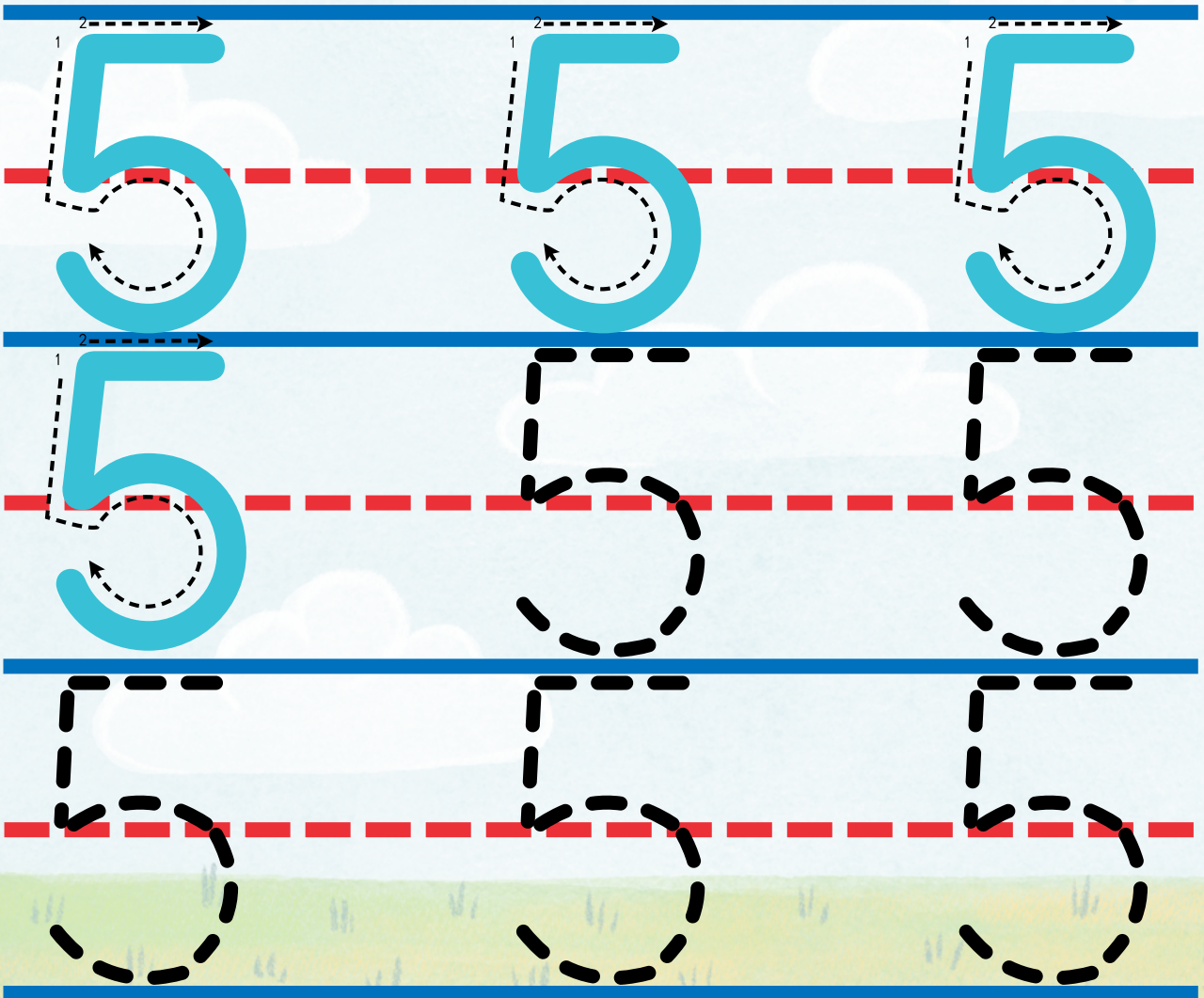


Count and Trace



Count and Trace

Five



Count and Trace

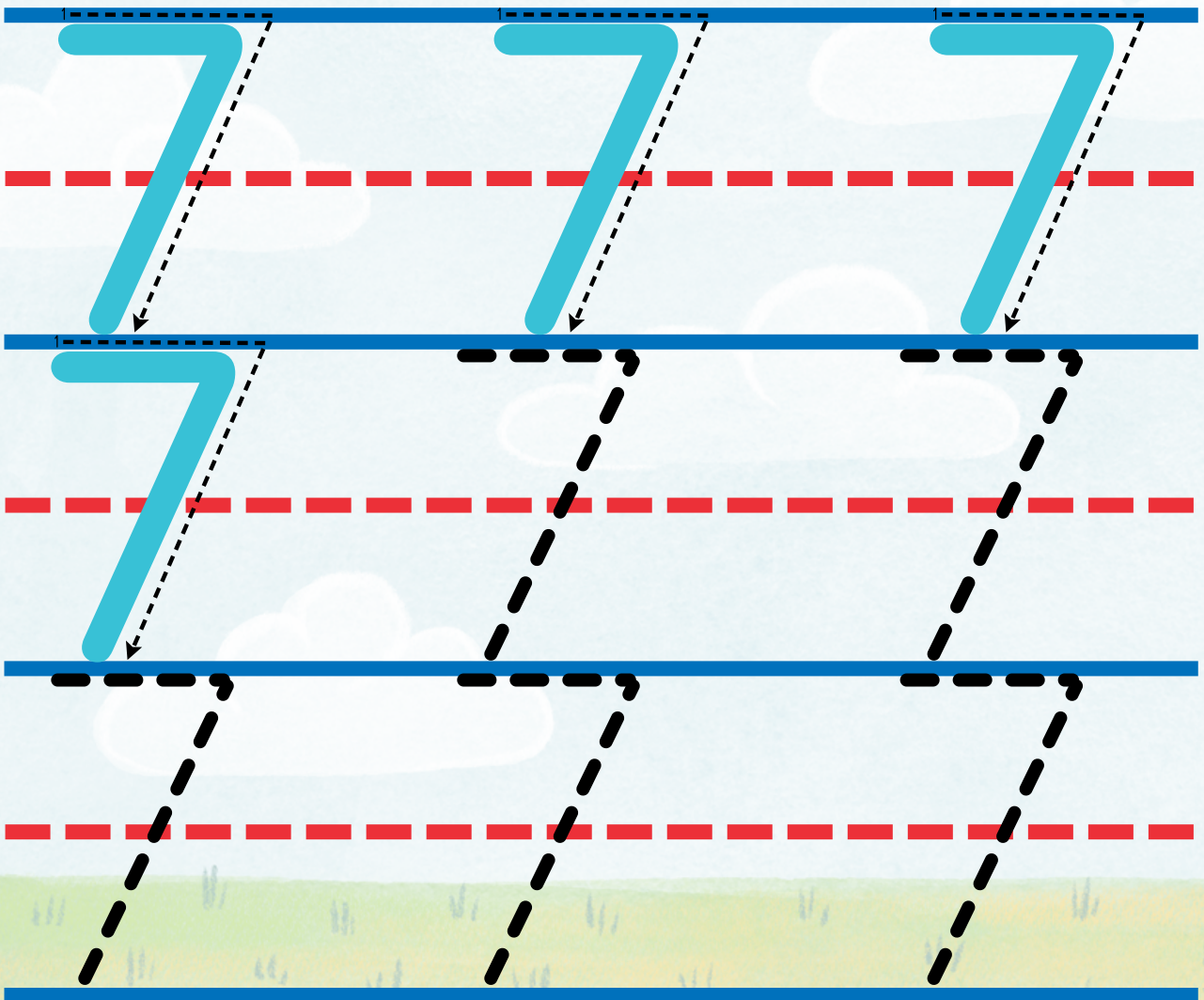
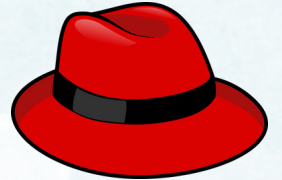
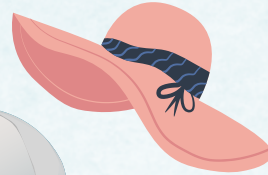
Six



Tracing practice for the number 6. The page is divided into three rows, each with three columns. Each row is bounded by a solid blue top line, a dashed red middle line, and a solid blue bottom line. The first row contains three large blue numbers '6' with dashed outlines and arrows indicating the stroke direction. The second row contains one large blue number '6' with a dashed outline and stroke direction, followed by two dashed black numbers '6' for tracing. The third row contains three dashed black numbers '6' for tracing.

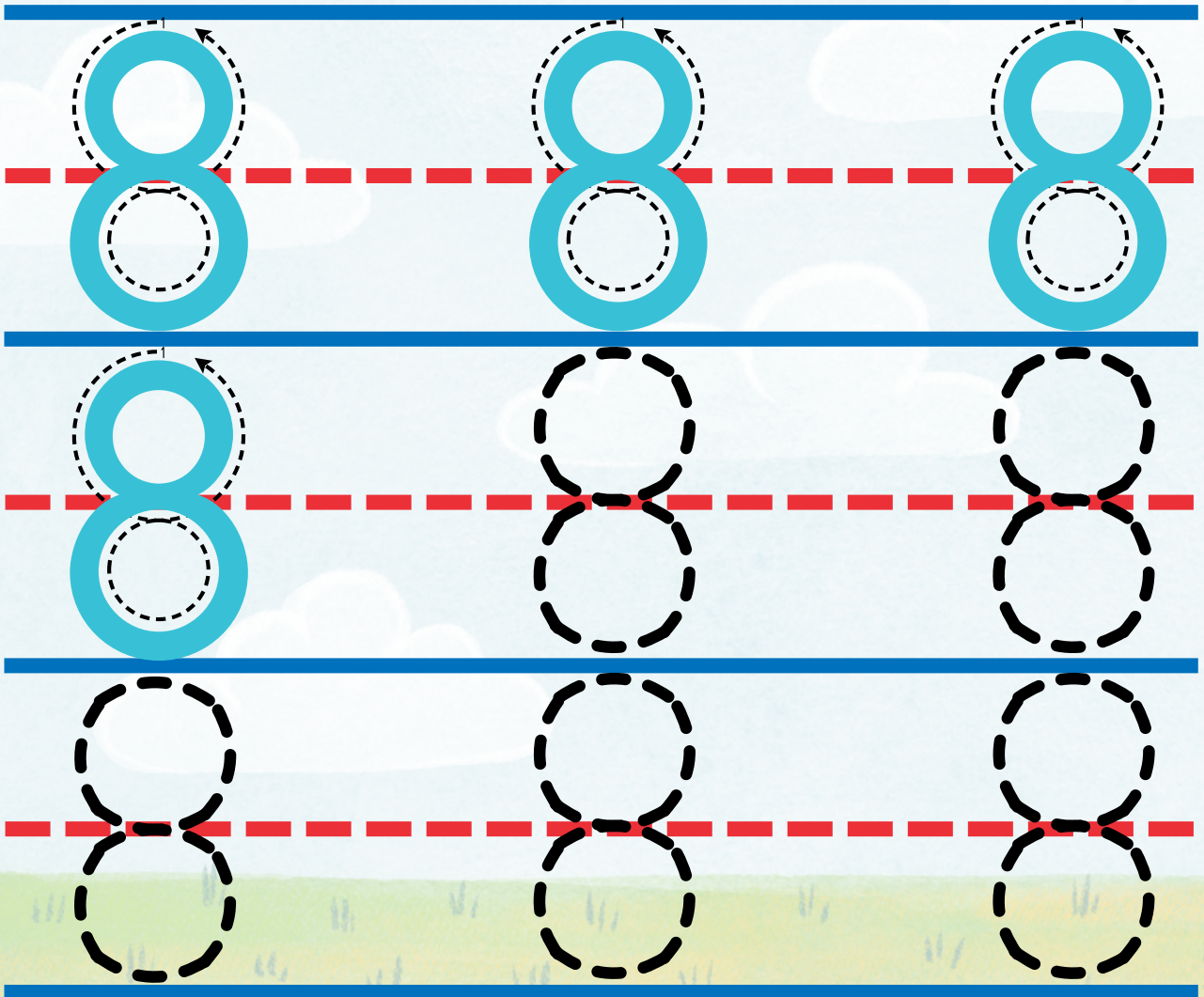
Count and Trace

Seven



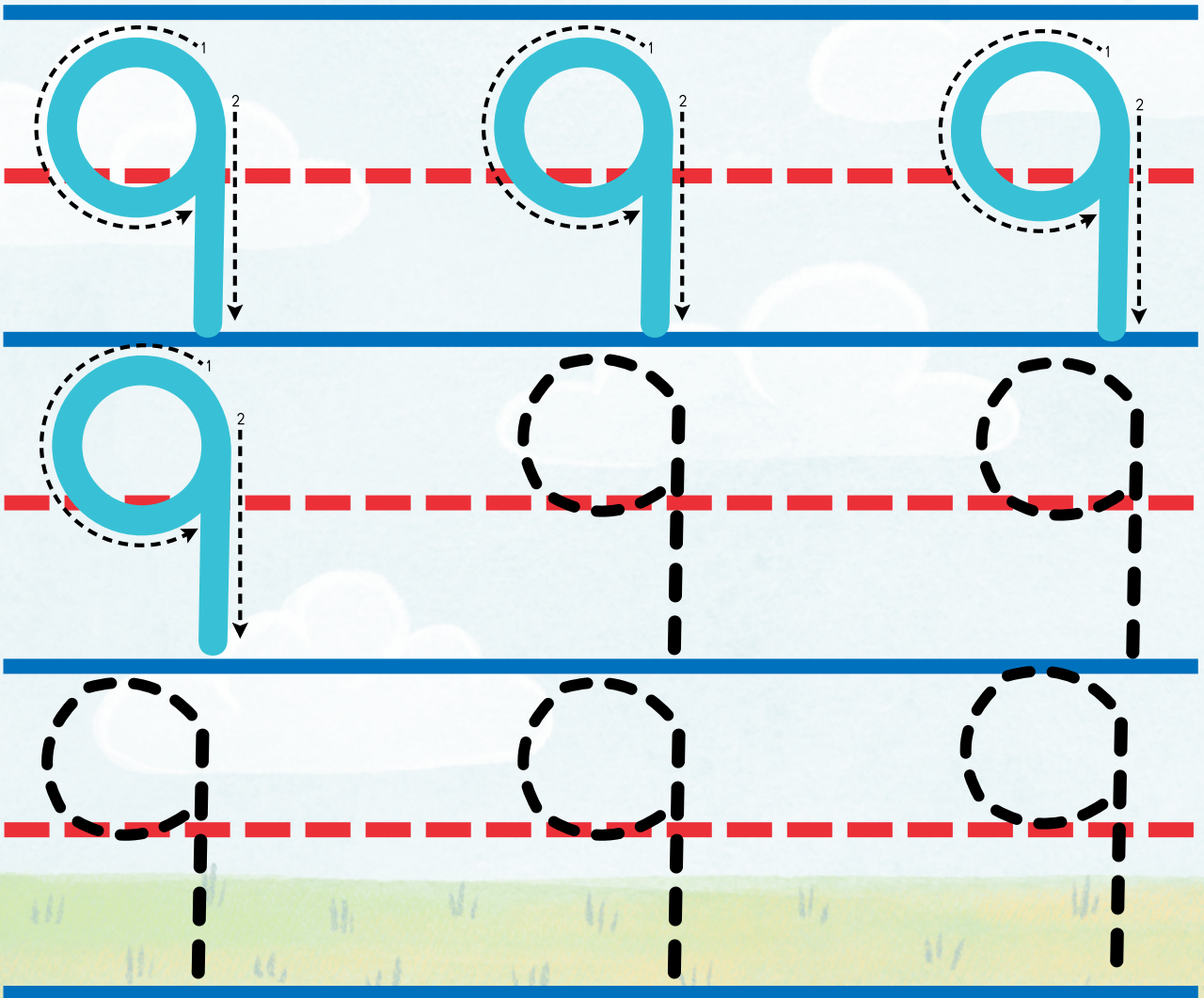
Count and Trace

Eight



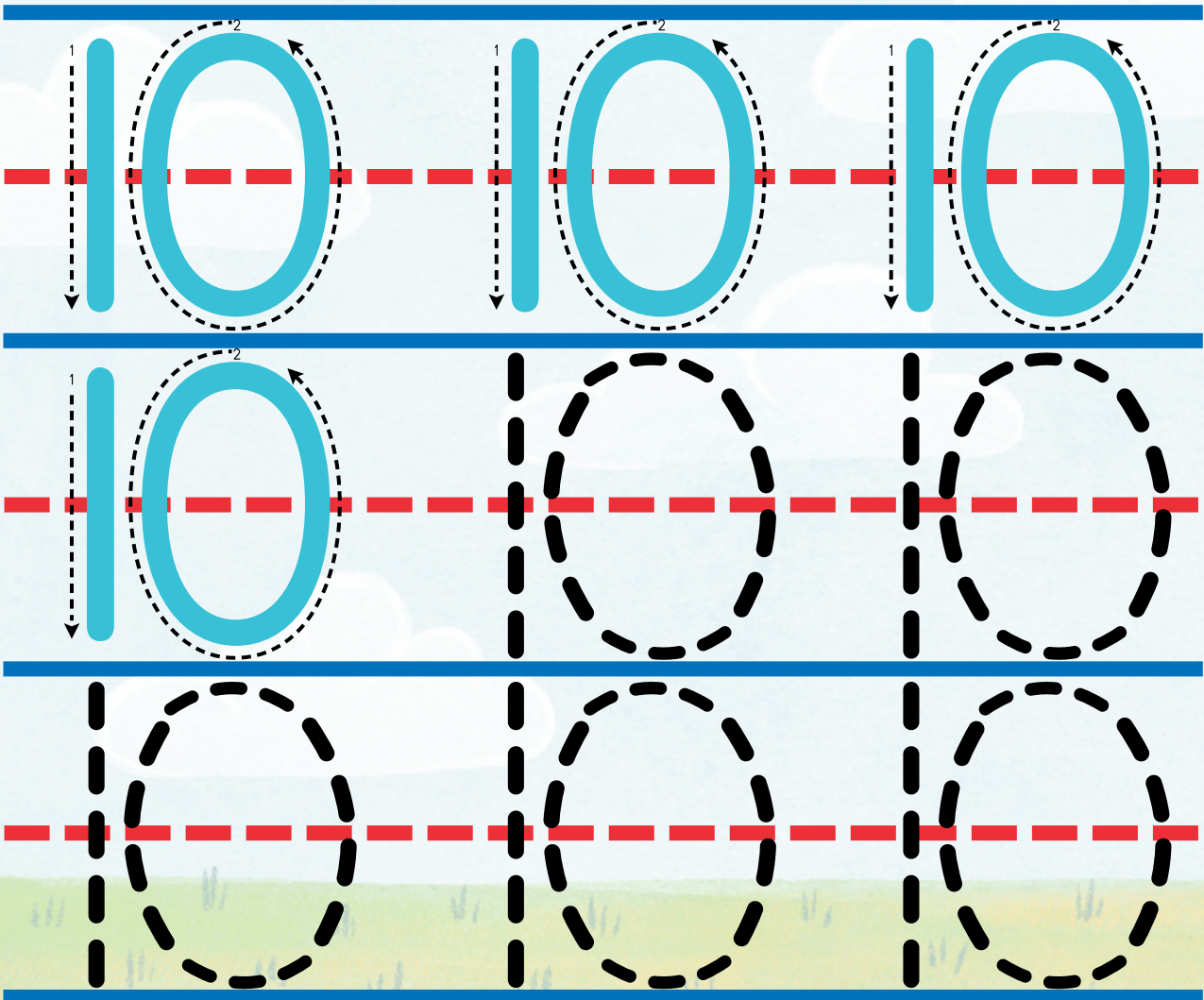
Count and Trace

Nine



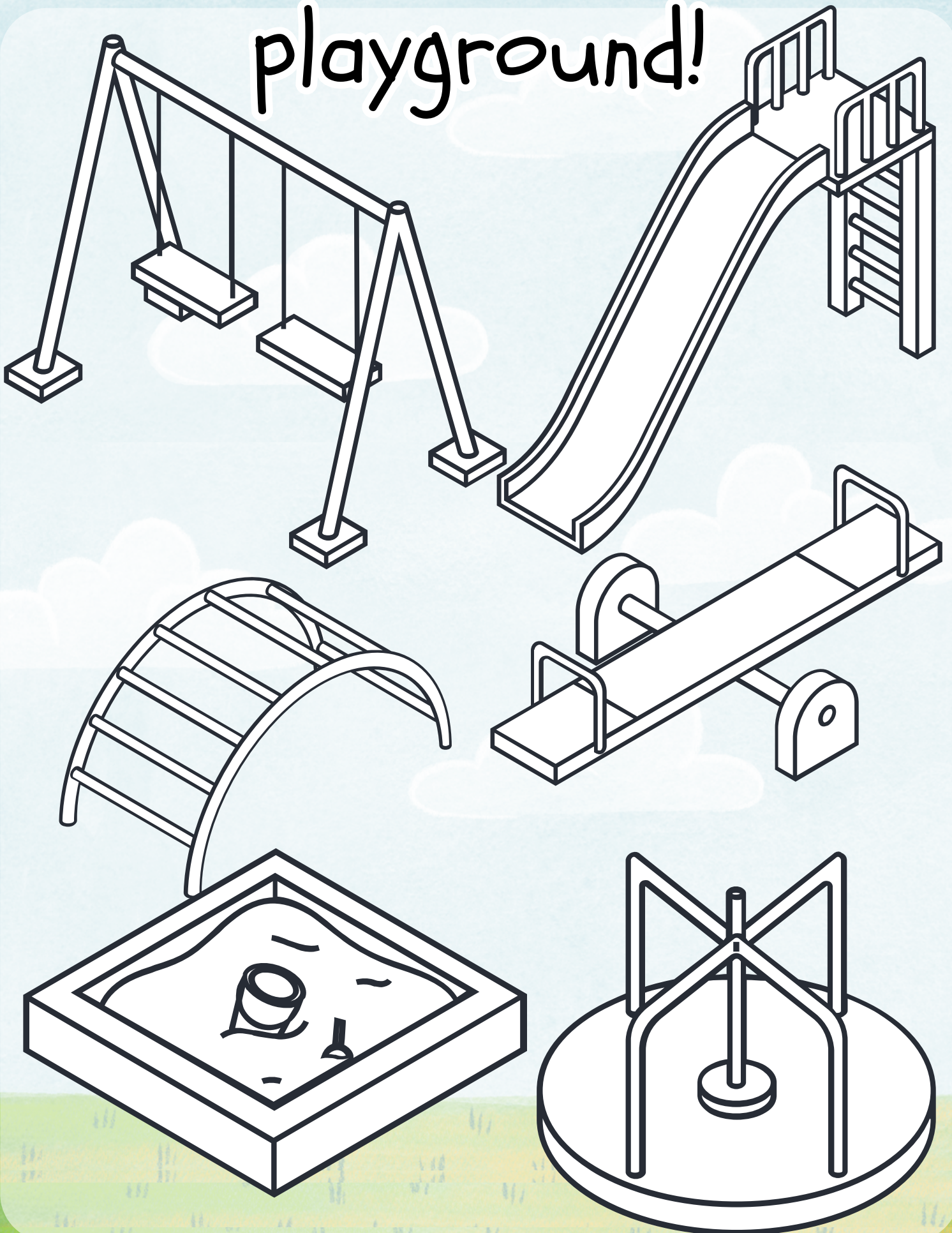
Count and Trace

Ten



Color the kids

playground!

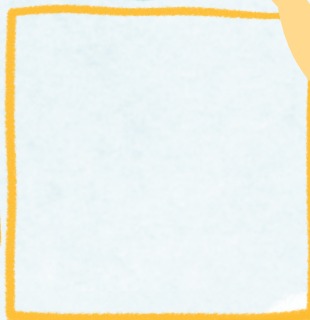


Hopscotch!

Fill the missing numbers!



10



8



5



4



2

1

